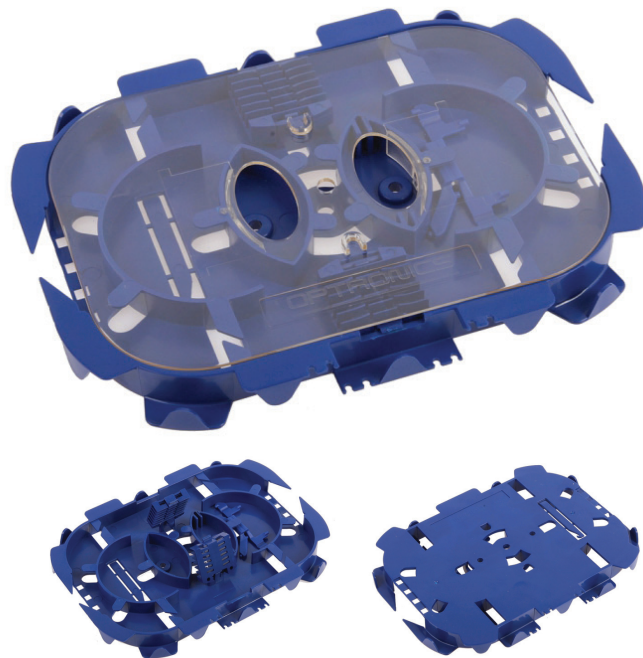


FIBER SPLICE TRAY SPT01

12-24 SPLICES WITH STORAGE SPACE



CE
ID: 3154

Splice tray SPT01 24F has an innovative ABS construction, which allows to mount 24 splices.

- Splice tray SPT01 allows to put the tubes and pigtails in special external management channels.
- Each splice tray is equipped in mounting screws or double-side tape for adjusting the splice tray to patch panel, wall cabinets or distribution cabinets.
- Tray has 3 independent rings which makes it easy to stack fibers and allows to make "8's" of fibers.
- The splice basket is installed and under it there is space to install fibers there.
- The tray is equipped with a hook handle - to break out of the tray, which makes it easy to pull fibers from the tray. Trays can be stacked together using the included hinge.

Dimensions [mm]	168 x 124 x 13
Weight [g]	84
Material	ABS, Lid – transparent polycarbonate
Operating temperature [C]	-40° to +60°